



GREEN ROAD, SOUTHGATE, N14

FULLY DETACHED & LARGER THAN AVERAGE 3 BEDROOM DOUBLE FRONTED CHALET BUNGALOW ON A BOLD CORNER PLOT WITH A GARAGE & CARPORT APPROACHED VIA TRENT GARDENS. T

To the Ground Floor there is a Spacious Reception Room & A Large Double Glazed Conservatory with Attractive Outlook onto Private Garden, Bar Room/Study, Fitted Kitchen, Bathroom & Bar Room/Possible Study. There are Stairs from the Reception Room Leading to the First Floor with a Further Double Bedroom with Potential to Add an En Suite Bathroom. The Front Garden is of a Good Size and Could Provide Further Off Street Parking - SPP.
Available Chain Free.



ACCOMMODATION

* DOUBLE GLAZED ENTRANCE PORCH * HALLWAY * SPACIOUS RECEPTION ROOM & DOUBLE GLAZED CONSERVATORY * FITTED KITCHEN * BAR ROOM/STUDY * 2 BEDROOMS ON THE GROUND FLOOR * BATHROOM WITH SEPARATE SHOWER CUBICLE * BEDROOM 3 IN THE LOFT. WELL TENDED GARDENS TO SIDE & REAR * OWN DRIVE ACCESSED FROM TRENT GARDENS

*

* SERVICES: GAS CENTRAL HEATING * FEATURES: DOUBLE GLAZING *

PRICE: £780,000 FREEHOLD

ENTRANCE PORCH & ENTRANCE HALL:
Good Sized with Stained Glass, Leading to Inner Door and Hallway. Concealed Radiator.



RECEPTION ROOM: PIC. 1 24'8 x 12'11 (7.52m x 3.94m)
A good Sized Room Approached Via the Study/Bar Room with Double Glazed Bay Window to Front, 2 Radiators, Cornicing, Stairs to Bedroom in Loft, Wide Archway to Double Glazed Conservatory.



RECEPTION ROOM: PIC. 2
Different Aspect Showing Link to Conservatory Bringing Extra Space and Light.



RECEPTION ROOM: PIC. 3



LARGE DOUBLE GLAZED CONSERVATORY: 21' 10 x 9'6 (6.40m 3.05m x 2.90m)

Good Sized Room Overlooking the Garden with Double Glazed Windows Overlooking Rear Garden and Front. Radiator. One Wall Has Yorkstone and a Lower Display Area.



BAR ROOM/STUDY: 9'3 x 7'1 (2.82m x 2.16m)

Double Glazed Window to Front, Archway to Reception Room - Wall Can be Knocked Down to Incorporate the Kitchen - Large Opening with Base Units and Worktops Acting as a Divider.



FITTED KITCHEN: PIC. 1 12'6 x 10'5 (3.81m x 3.18m)

Ample Floor & Wall Units, Fully Tiled Walls, Integrated Appliances, Double Bowl Inset Stainless Steel Sink with Mixer Taps. Large Serving Hatch to Bar Room/Study, but this wall might be knocked down to Incorporate the 2 Rooms. Plumbed for Washing Machine.



FITTED KITCHEN: PIC. 2

Different Aspect Showing Double Glazed Sliding Patio Doors to Side Leading to Both Front & Garden.



BEDROOM 1: PIC. 1 14'11 x 12'7 (4.55m x 3.84m)
Attractive Main Bedroom with 2 x Double Glazed Windows - Bay to Front and Window Overlooking Front/Side Garden. Fitted Wardrobes, Radiator.



BEDROOM 1: PIC. 2
Different Aspect Showing Fitted Wardrobe Span.



BEDROOM 2: PIC. 1 11'1 x 8'10 (3.38m x 2.69m)
Double Glazed Window to Side Overlooking Front/Side Garden, Radiator.



BEDROOM 2: PIC. 2
Different Aspect Showing Fitted Wardrobes.



BATHROOM: 8'6 x 8'10 (2.59m x 2.69m)

Panelled Bath with Mixer Taps, Wash Hand Basin, Low Flush WC., Separate Walk in Shower, Fully Tiled Walls, double Glazed Windows.



BEDROOM 3 IN LOFT: 20' x 12'6 (6.10m x 3.81m)

Very Spacious Room with Fitted Wardrobes/Storage Cupboards and Large Double Glazed Window to Front. Eaves Storage, Radiator. Note: There Could be Scope to Add an En Suite.



REAR GARDEN:

Mainly Laid to Lawn. Reasonably Secluded with Paved Patio Area and Access to One of the Garages with Own Drive & Carport Area.



SUN TRAP PAVED PATIO AREA:



GARAGE & CARPORT WITH OWN DRIVE:



SIDE ELEVATION & GARDEN:

Well Maintained and Set Back from the Road. Mainly Laid to Lawn with Some Bushes.

FRONT GARDEN: PIC. 1

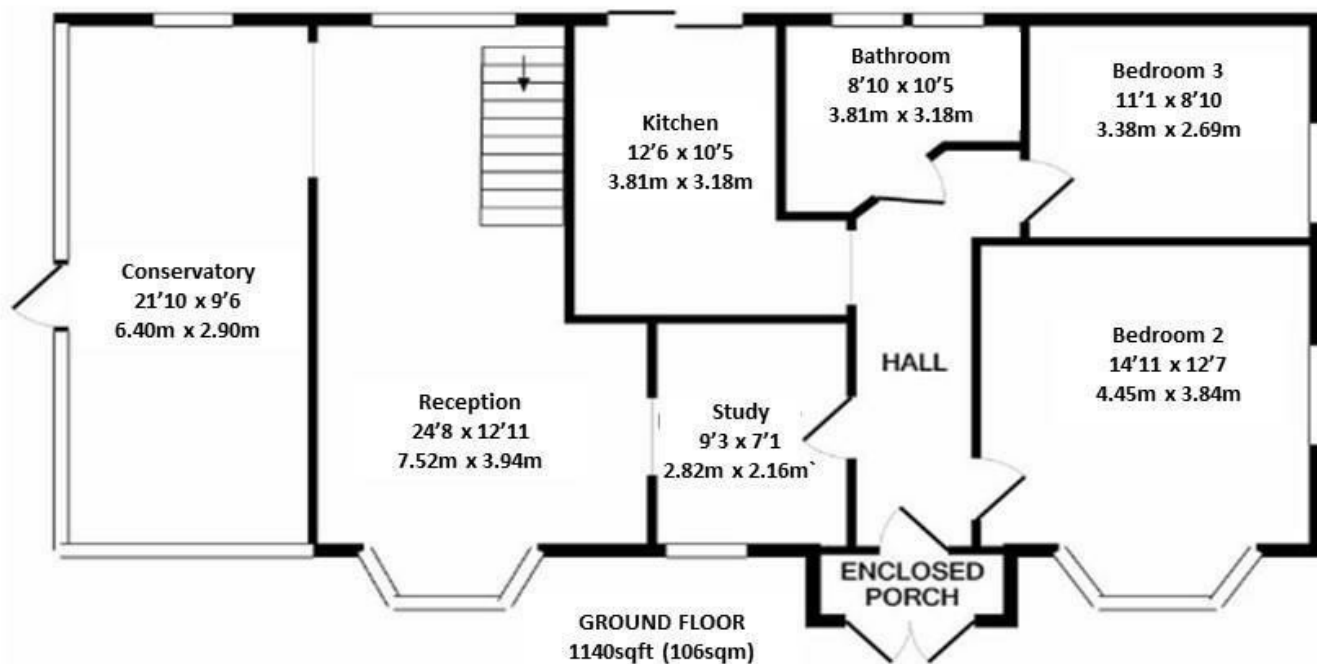


FRONT GARDEN: PIC. 2



SIDE ELEVATION OF PROPERTY:

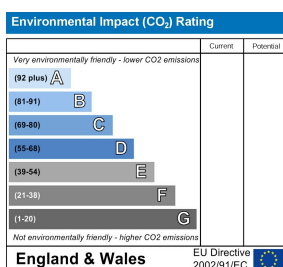
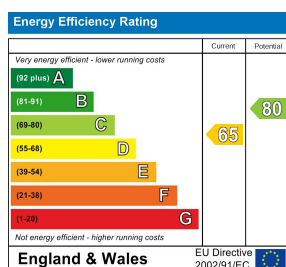
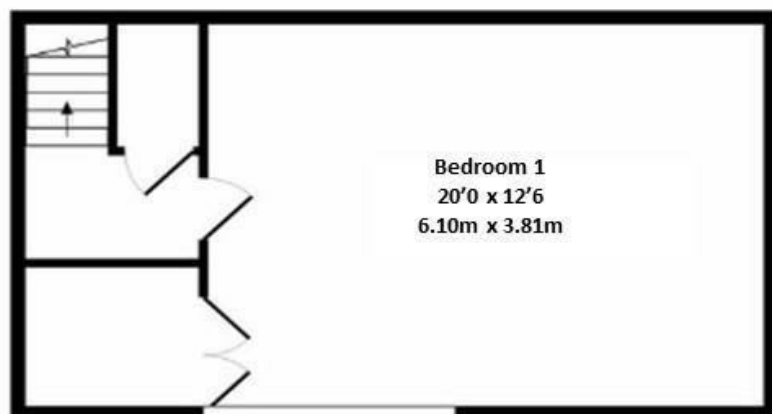




Green Road, Southgate N14

All measurements are approximate and for illustrative purposes only.

Total Area: 1442sqft (134sqm)



The agent has not tested any apparatus, equipment, fixtures, fittings or services and so cannot verify they are in working order, or fit for their purposes. Neither has the agent checked the legal documentation to verify the leasehold/freehold status of the property. The buyer is advised to obtain verification from their solicitor or surveyor. Also, photographs are for illustration purposes only and may depict items which are not for sale or included in the sale of the property. All sizes are approximate.